

# Machined Fly Reel Seats

## MODEL A7V - A10V

### VENTED MACHINED FLY REEL SEATS

- Uplocking Machined hoods with vented body and TiCH color anodized aluminum insert.
- Lightweight high tech look with maximum venting.
- Venting reduces weight and aluminum insert keeps the water, sand and marl out of the interior of the seat.
- Upper hood is recessible in cork grip.
- Ideal high tech reel seat for Saltwater and Salmon/Steelhead fly rods.

Aluminum Insert Color				LENGTH		ID		OD	RECESS HOOD OD	RECESS LENGTH
Gold	Red	Blue	Wood	mm	inch	mm	inch	mm	mm	mm
A7V-G	A7V-R	A7V-U	A7V-W	97.0	11.5	16.4	20.5	8.5		
A10V-G	A10V-R	A10V-U		102.0	13.0	18.6	22.1	11.5		

- Dimensions in mm.



A7V-G



A7V-R



A7V-U



A7V-W



A10V-G



A10V-R

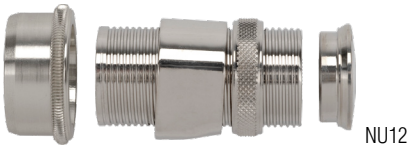


A10V-U

## MODEL NU12

### NICKEL SILVER UPLOCKING FLY REEL SEAT

- Skeleton includes one each: recessed hood, threaded body, locking nut, sliding hood, and end cap.
- Complete reel seat is unassembled.
- The recessed hood is nickel-finished aluminum. The rest of the skeleton consists of nickel silver alloy.
- Recess hood O.D. 20.0 mm.



NU12



NBRG12



NTMG12



NU12BRG



NU12TMG

		Hardware Finish	LENGTH		INSERT I. D.		
Natural Wood	Finish	Nickel Silver	mm	inch	mm	inch	Insert Only
Burled Rosewood	Glossy	<b>NU12BRG</b>	96.21	3.788	11.5	0.453	<b>NBRG12</b>
Burled Rosewood	Satin	<b>NU12BRS</b>	96.21	3.788	11.5	0.453	<b>NBRS12</b>
Tiger Maple	Glossy	<b>NU12TMG</b>	96.21	3.788	11.5	0.453	<b>NTMG12</b>
Tiger Maple	Satin	<b>NU12TMS</b>	96.21	3.788	11.5	0.453	<b>NTMS12</b>
Hardware Only		<b>NU12</b>					